

# Garden State Gardens

A Consortium of New Jersey's Public Gardens

# P A S S P O R T

to Gardens!



*Come see why we are the "Garden State"!*



***This Passport Belongs to:***

Name: \_\_\_\_\_



gardenstategardens.org  
Facebook: GardenStateGardens  
Instagram: @garden.state.gardens

# Be in the Beauty!

Use your Garden State Gardens Passport to log all of your NJ public garden visits (see pages at back). The passport has the information you need to fulfill the gardens' visit requirements. Have fun collecting passwords, identifying key plants, gathering stamps, and other requirements at each of the Garden State Gardens listed in the Passport.



Share your garden visits with us on social media. We love seeing you in our gardens!

#gardenstategardensconsortium

Once you have visited all of our member gardens and fulfilled the passport requirements, email us for a prize!

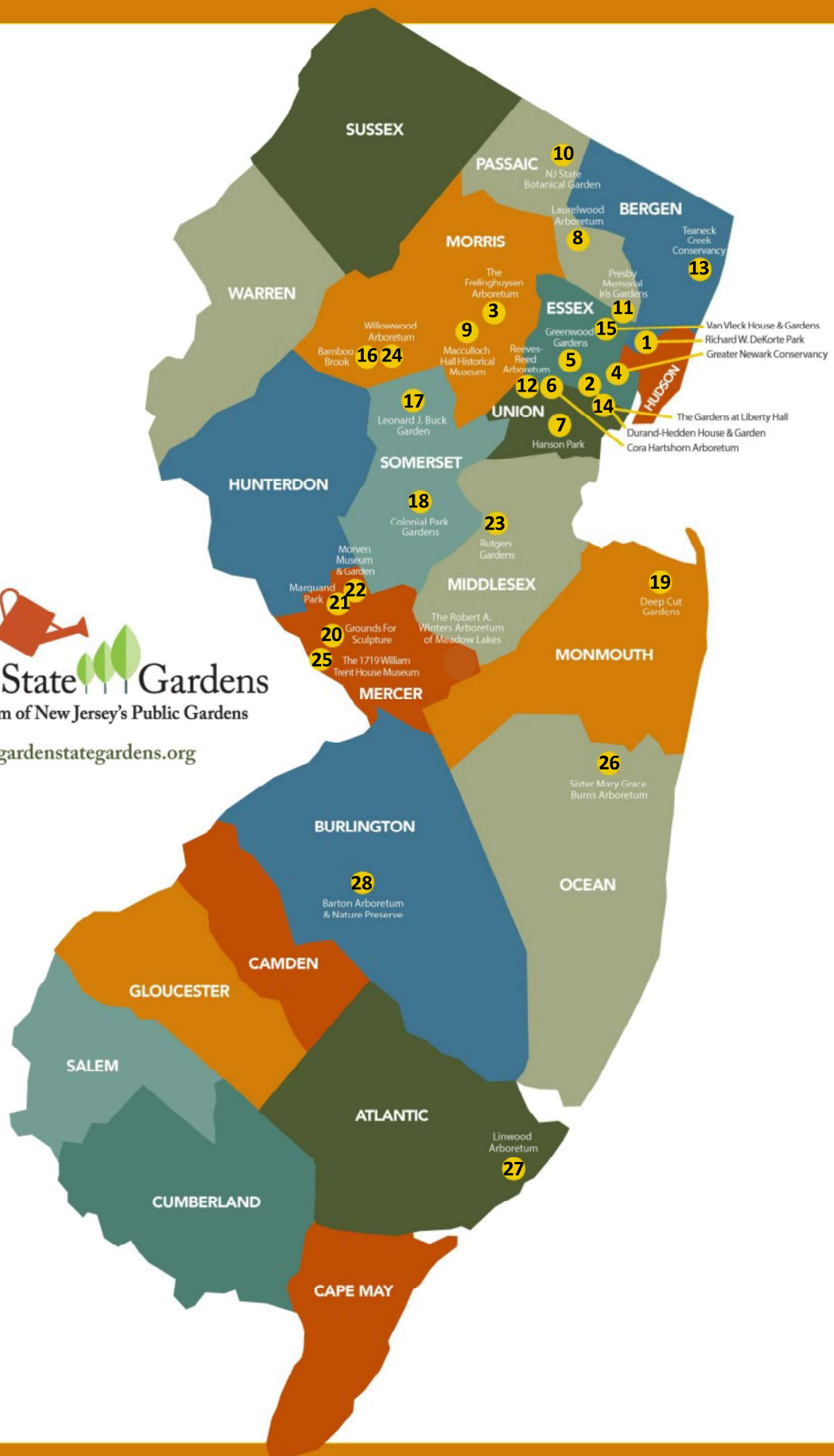
[info@gardenstategardens.org](mailto:info@gardenstategardens.org)

Garden State Gardens is a consortium of New Jersey public gardens dedicated to creating public awareness and appreciation for the beauty and horticultural educational, artistic, and historic value of the great public gardens of New Jersey!

Be sure to check each garden's website or social media to confirm their opening hours & visitor policies prior to visit.



**Garden State Gardens**  
A Consortium of New Jersey's Public Gardens  
[www.gardenstategardens.org](http://www.gardenstategardens.org)



# List of Gardens

<u>Northern Section</u> .....	7
1. Richard W. DeKorte Park	
2. Durand-Hedden House & Garden	
3. Frelinghuysen Arboretum	
4. Greater Newark Conservancy	
5. Greenwood Gardens	
6. Cora Hartshorn Arboretum	
7. Hanson Park Conservancy	
8. Laurelwood Arboretum	
9. Macculloch Hall Historical Museum	
10. New Jersey State Botanical Garden/Skylands	
11. Presby Memorial Iris Gardens	
12. Reeves-Reed Arboretum	
13. Teaneck Creek Conservancy	
14. The Gardens at Liberty Hall	
15. Van Vleck House & Gardens	
<u>Central Section</u> .....	22
16. Bamboo Brook Outdoor Ed. Center	
17. Leonard J. Buck Garden	
18. Colonial Park Gardens	
19. Deep Cut Gardens	
20. Grounds For Sculpture	
21. Marquand Park	
22. Morven Museum & Garden	
23. Rutgers Gardens	
24. Willowwood Arboretum	
25. The 1719 William Trent House Museum	
<u>Southern Section</u> .....	32
26. Sister Mary Grace Burns Arboretum of Georgian Court University	
27. Linwood Arboretum	
28. Barton Arboretum and Nature Preserve at Medford Leas	

# Symbol Key



- Handicap Accessible



- Food Services



- Art Gallery



- Educational Programs



- Picnic Area



- Pet Friendly



- Restrooms



- Entry Fee



- Fee only for museum, grounds are free



- Twitter



- Instagram



- Facebook



- Website

# Richard W. DeKorte Park

1 DeKorte Park Place Lyndhurst NJ 07071

201-460-1700



DeKorte Park features 3.5 miles of walking paths, panoramic views of wetlands and waterways, and birds galore, all framed by the New York City skyline. The park, which was once slated to be a landfill, is the focal point of NJSEA activities.

**Garden highlights:** Science Center, Wildlife observation, Observatory unique and diverse urban eco-system.

**Passport Fulfillment:** What did you enjoy most?

**Acres: 30.4 Est. 1980**

**Amenities:**



Richard W. DeKorte Park



Richard W De Korte



<https://www.njsea.com/parks-and-trails/>

# Durand-Hedden House & Garden

523 Ridgewood Road, Maplewood, NJ 07040

973-763-7712



The house, which evolved from a small late 18th c. farmhouse into a Victorian country house and then a mid-20th c. suburban home, serves as Maplewood’s historic house museum. It sits in picturesque Grasmere Park which features a sloping meadow coursed by a stream, native trees & shrubs, and perennial beds that reflect the different periods of the house.

**Garden highlights:** A large herb garden for teaching and pleasure; several Harrison Apple trees, an early heirloom variety used to make Newark Cider.

**Passport Fulfillment:** Answer the question: "Is there a wood bridge which crosses the little stream on the property?"

**Acres: 1.7**

**Est. 1981**

**Amenities:**



durandhedden



<https://www.durandhedden.org/>



# The Frelinghuysen Arboretum

353 East Hanover Ave. Morris Township, NJ 07960 973-326-7601



Built during the Gilded Age, the 127-acre Frelinghuysen Arboretum is a facility of Morris County Park Commission. It features numerous themed gardens, nature trails, and an education center offering year round programs and events.

**Garden highlights:** Rose and themed gardens, seasonal displays, and trails to walk.

**Acres: 127 Est. 1971**

**Passport Fulfillment:** Find the password at the kiosk next to the front door of the Haggerty Education Center.

**Amenities:**



Morris County Parks Commission



morrisparksnj



[www.morrisparks.net/index.php/parks/frelinghuysen-arboretum](http://www.morrisparks.net/index.php/parks/frelinghuysen-arboretum)

# Greater Newark Conservancy

32 Prince Street Newark, NJ 07103

973-642-4646



Located in downtown Newark, the 1.5-acre Prudential Outdoor Learning Center features outdoor exhibits located in a series of ten thematic gardens. Come to gaze into the water of the pond, learn about urban agriculture, and experience a wealth of scents, sights and sounds in the sensory garden.

**Garden highlights:** Environmental Education, Community Greening & Urban Agriculture, Environmental Justice, Job Training.

**Passport Fulfillment:** What is the Conservancy's chicken's name?

**Acres: 1.5**

**Est. 1995**

**Amenities:**



GreaterNewarkConservancy



[www.citybloom.org](http://www.citybloom.org)



@CityBloom87



citybloom87

# Greenwood Gardens

274 Old Short Hills Road Short Hills, NJ 07078

973-258-4026



Designed in the early 20th century, Greenwood offers visitors a peaceful haven in which to connect with nature set against a backdrop of startling beauty and the artifacts of unique family history.

**Garden highlights:** Greenwood Gardens is an enchanted hide-away graced with formal terraces, winding paths, woodlands, grottoes, fountains, Arts and Crafts follies.

**Passport Fulfillment:** Rubber Stamp at Visitor’s Center.

**Acres: 28**

**Est. 2003**

**Amenities:**



greenwoodshorthills



greenwoodgardens.org



greenwoodgardensnj

# The Cora Hartshorn Arboretum

324 Forest Drive South Short Hills, NJ 07078

973-376-3587



The Cora Hartshorn Arboretum is a historic woodlands garden and educational institution. Our mission is to foster and promote environmental awareness, education, and stewardship within the greater community.

**Garden highlights:** Must Visit the Stone House to view animal exhibits. On the grounds you can see kettle moraines, hilly slopes and a natural amphitheater.

**Passport Fulfillment:** Ask for password.

**Acres: 16.5 Est. 1961**

**Amenities:**



@HartshornArboretum



@CoraHartshorn



<https://hartshornarboretum.org/>

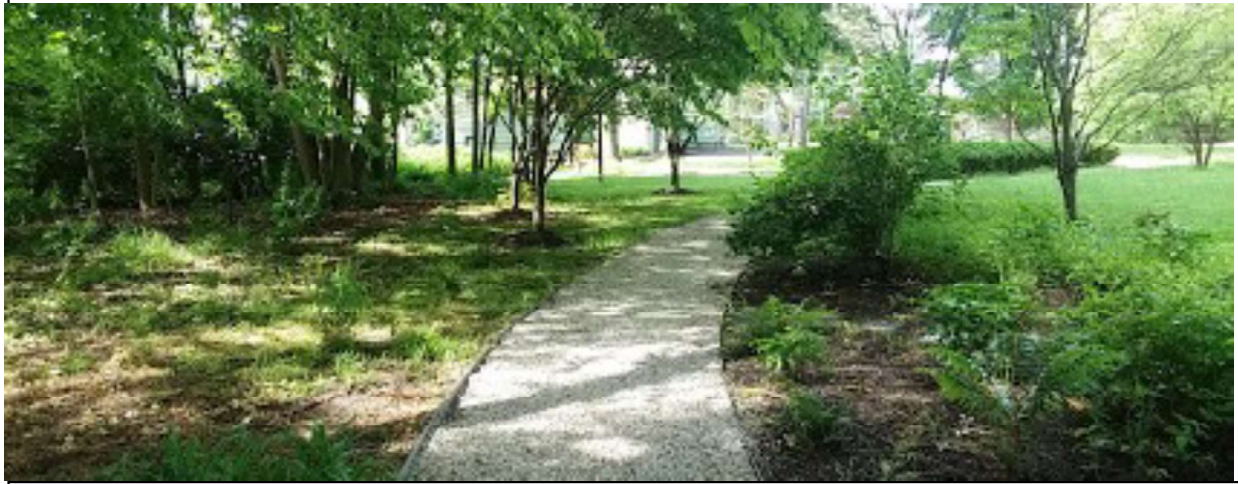


hartshornarboretum

# Hanson Park Conservancy

38 Springfield Ave, Cranford, NJ 07016

908-709-7283



Situated on a beautiful stretch of the Rahway River, the property had once been owned by Doctor Hanson, a notable Cranford physician, and whose mid-1800s Queen Anne Victorian home houses the Cranford and Union County Historical Society offices.

**Garden highlights:** An intimate pocket park with riparian plantings along the river, mature trees, a small formal garden and a woodland amphitheater, connected by walking trails.

**Passport Fulfillment:** Find the remains of the historic fireplace. Write down the name of the club to which it belonged.

**Acres: 0.25    Est. 2004**

**Amenities:**



[hansonparkconservancy](https://www.facebook.com/hansonparkconservancy)



[@HansonParkCon](https://twitter.com/HansonParkCon)



[www.hansonparkconservancy.com](http://www.hansonparkconservancy.com)

# Laurelwood Arboretum

725 Pines Lake Drive West Wayne, NJ 07470

973-831-5675



Laurelwood features woodland trails, gardens, wildlife, ponds, streams and hundreds of varieties of rhododendrons, and other unusual species of plants and trees.

**Garden highlights:** An accessible Sensory Garden, the Sculpture Trail, the Summer Garden, the Perennial Garden, the South Rock Garden, and other specialized gardens. Buildings include the Knippenberg Center for Education and two working greenhouses.

**Passport Fulfillment:** Password at the notice board.

**Acres: 30**

**Est. 2007**

**Amenities:**



@laurelwoodarboretum



@LaurelwoodArbo1



laurelwoodarboretum.org



friendsoflaurelwoodarboretum

# Macculloch Hall Historical Museum

45 Macculloch Avenue, Morristown, NJ 07960

973-538-2404



The museum preserves and interprets the 1810 historic house and gardens, unparalleled collection of the work of political cartoonist Thomas Nast. The Maccullochs cultivated the land primarily to feed their family, planting a traditional kitchen garden as well as apple and pear orchards.

**Garden highlights:** The sundial on the upper lawn was installed in 1876; the sassafras tree the second oldest and largest in New Jersey; and more than 65 varieties of heirloom roses.

**Passport Fulfillment:** Who gave the wisteria, which covers Macculloch Hall's back portico, to the Macculloch Miller family?

**Acres: 2**

**Est. 1950**

**Amenities:**



Macculloch Hall Historical Museum



@macculloch\_hall



maccullochhall.org



@maccullochhall

# New Jersey Botanical Garden

2 Morris Road Ringwood, NJ 07456

973-962-9534



NJBG is located on the property of Francis Lynde Stetson (1846-1920) “Skylands Farms,” and maintains a stylish mansion of native granite, many different gardens, and a crab apple allée.

**Garden highlights:** Perennial Garden, Peony Garden, Azalea Garden, Wildflower Garden, Garden and Mansion tours.

**Passport fulfillment:** What did you enjoy most?

**Acres: 96      Est. 1966**

**Amenities:**



@SkylandsBotanicalGarden



www.njbg.org



@NJBGSkylands



njbgskylands



# Presby Memorial Iris Gardens

474 Upper Mountain Avenue, Upper Montclair, NJ 07043 973-783-5974



The Presby Memorial Iris Gardens was established in 1927 to honor Frank H. Presby of Montclair, a leading horticulturalist and a founder of The American Iris Society. This living museum, listed on the State and National Registers of Historic Sites, offers a display of thousands of iris varieties.

**Garden highlights:** Over 14,000 iris blooming from mid-May to June!

**Passport fulfillment:** Identify the oldest iris you can find in the garden.

**Acres: 6.5      Est. 1927**

**Amenities:**



presby.irisgardens.3



@PresbyIrises



www.essexcountyparks.org

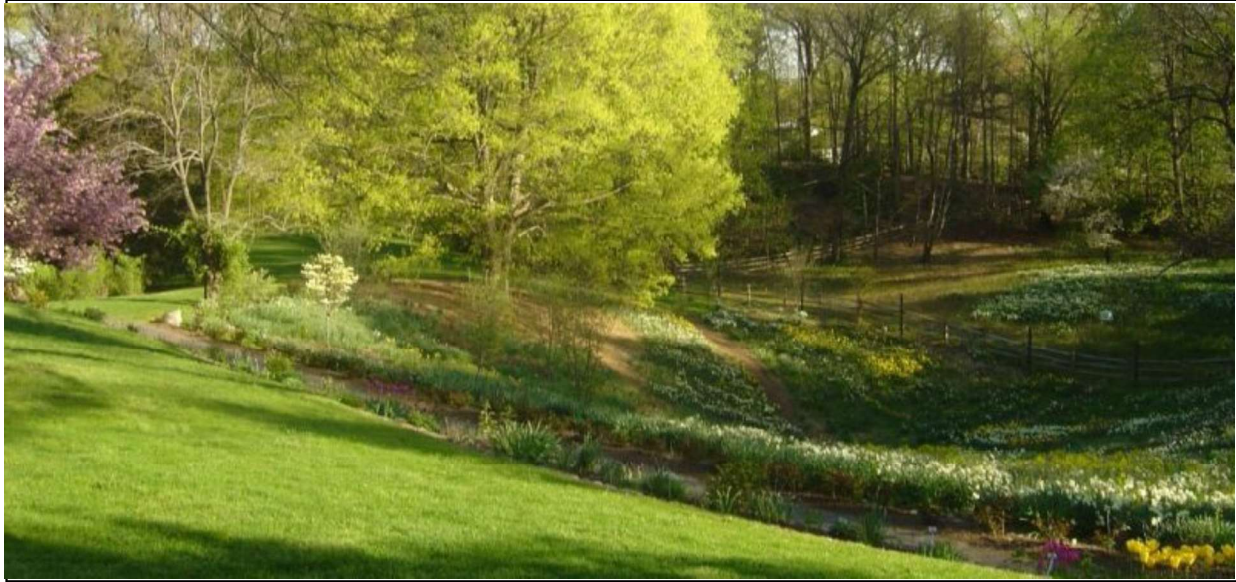


@presbyirisgardens

# Reeves-Reed Arboretum

165 Hobart Avenue, Summit, NJ 07901

908-273-8787



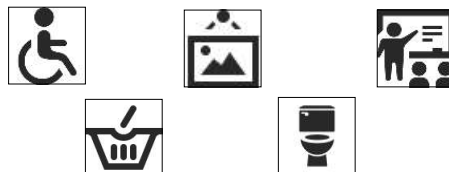
With landscapes designed and built by Calvert Vaux, Ellen Biddle Shipman, and Carl Pilat during the American Country Place Era of landscape design, Reeves-Reed Arboretum is open year round offering formal and natural gardens, woodland trails, educational programming, and seasonal events.


**Garden highlights:** National Historic Landmark featuring award-winning gardens and woodland trails as well as thousands of daffodils.

**Passport fulfillment:** What was your favorite part of the arboretum?


**Acres: 13.5      Est. 1974**


**Amenities:**



 @Reeves-reedarboretum

 @ReevesReedArbor

 [www.Reeves-reedarboretum.org](http://www.Reeves-reedarboretum.org)

 reevesreedarboretum

# Teaneck Creek Conservancy

20 Puffin Way, Teaneck, NJ 07666

201-836-2403



The Teaneck Creek Conservancy is a member-supported, non-profit organization dedicated to the reclamation and protection of the environmental, cultural, and historical legacy of the Teaneck Creek watershed.

**Garden highlights:** Nature trails, eco-art, native plant and butterfly gardens and world-class bird watching opportunities.

**Passport fulfillment:** Find Password at kiosk.

**Acres: 46**

**Est. 2001**

**Amenities:**



@teaneckcreek



@teaneckcreek



www.teaneckcreek.org



teaneckcreek

# Gardens at Liberty Hall

1003 Morris Avenue, Union, NJ 07083

908-527-0400



Liberty Hall’s gardens are designed to bloom from April to the first frost, and display over 250 years of American garden design. Situated across from Kean University campus, the museum and gardens illustrate the life and times of the remarkable people who lived there, including NJ’s first governor.

**Garden highlights:** English parterre garden, maze, rose garden, apple orchard, Level II Arboretum including historically significant trees. Both guided and self-guided garden tours available.

**Passport Fulfillment:** Ask for stamp at Visitor's Center (the Blue House)

**Acres: 12 Est. 1772**

**Amenities:**



Liberty Hall Museum and Arboretum



<https://libertyhall.kean.edu/>

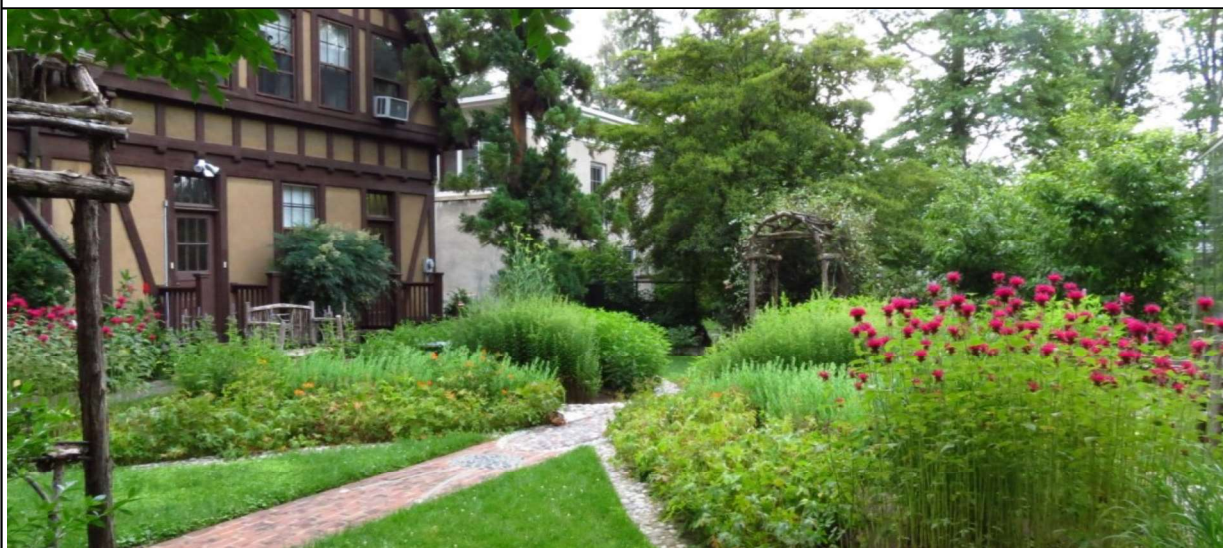


@LHM\_grounds

# Van Vleck House and Gardens

21 Van Vleck Street, Montclair, NJ 07042

973-744-4752



A classic & early 20th century Mediterranean-style house, surrounded by a six acre park-like setting, welcomes visitors to enjoy all the garden spaces and to join us for classes, concerts, and special events.

**Garden highlights:** Butterfly Garden (pictured above); Formal, Edible, Winter, and Tennis Court Gardens; Wisteria Courtyard; Wildflower Meadow, and more.

**Passport fulfillment** (3-steps):  
Step 1: Write the scientific name of the tree that is the focal point of the Formal Garden.  
Step 2: How many bee hives are on the Van Vleck property?  
Step 3: How many columns are in the woodland pergola?

**Acres: 6      Est. 1993**

**Amenities:**



@vanvleckgardens



www.vanvleck.org



@VanVleckGardens



Vanvleckhouseandgardens

# Bamboo Brook Outdoor Education Center

170 Longview Road, Far Hills, NJ 07931

973-326-7600



Once the home of Martha Brookes Hutcheson, one of America's first female landscape architects, this pastoral property is now a facility of Morris County Park Commission. The gardens are restored to their 1944 layout, and include many classical garden elements, including ha-has and allées, all planted with a palette of native plants.

**Garden highlights:** The surrounding landscape includes rolling meadows and wooded areas. A wide variety of birds, butterflies, and animal life inhabit the area.

**Passport fulfillment:** Password at kiosk in upper parking lot.

**Acres: 687 Est. 1972**

**Amenities:**



Morris County Park Commission



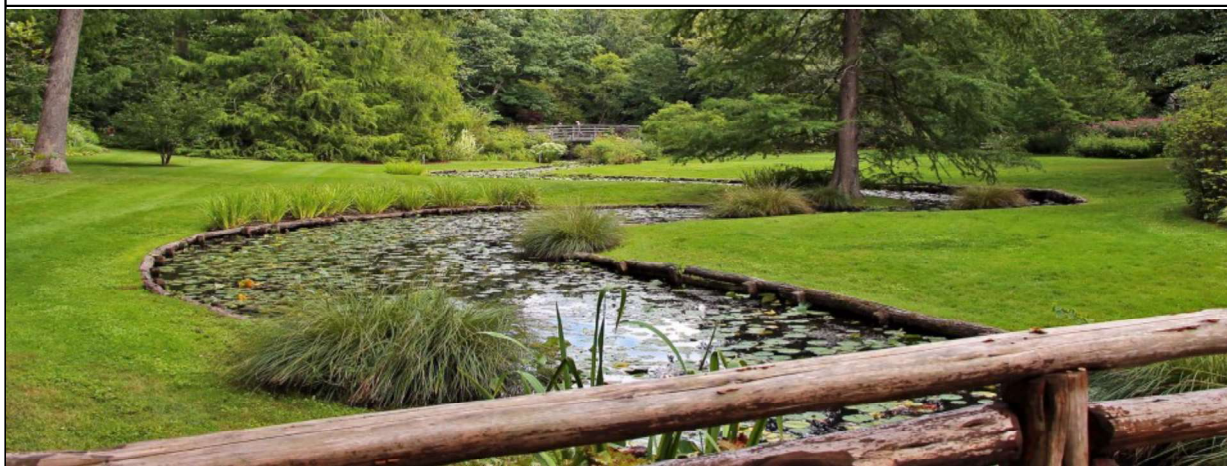
morrisparksnj

[www.morrisparks.net/index.php/bparks/bamboobrook](http://www.morrisparks.net/index.php/bparks/bamboobrook)

# Leonard J. Buck Garden

11 Layton Road, Far Hills, NJ, 07931

908-722-1200 (5621)



Situated in an ancient glacial valley, Leonard J. Buck Garden is an inspiring rock, alpine and woodland garden. A garden of horticultural, geological, and historical significance, the grounds are distinguished by a series of planted rock outcroppings & paths featuring drifts of wildflowers, ferns, bulbs, & perennials. Moggy Hollow Brook and an upper and lower pond complement the garden along with rustic architecture.

**Garden highlights:** Native and exotic plants displayed in a woodland setting, streams and stunning views. Seasonally beautiful, exceptional in the spring.

**Passport fulfillment:** Name the 112' tree growing here that for years was thought to be extinct.

**Acres: 29 Est. 1940**

**Amenities:**



 @LJBuckGarden

 ljbuckgarden

 [www.somersetcountyparks.org](http://www.somersetcountyparks.org)

# Colonial Park Gardens

156 Mettlers Road, Somerset, NJ 08873

908-722-1200(5721)



Colonial Park Gardens, managed by the Horticulture Department of the Somerset County Park Commission, features an accredited Arboretum of flowering trees, shrubs, evergreens, a Fragrance & Sensory Garden, a newly designed Perennial Garden and the Rudolf W. van der Goot Rose Garden.

**Garden highlights:** Formal and informal display gardens designed and maintained for enjoyment and education.

**Passport Fulfillment:** Name the first rose you see in the rose garden.

**Acres: 13**

**Est. 1969**

**Amenities:**



@colonialparkgardens



@CParkGardens



www.somersetcountyparks



colonialparkgardens



# Deep Cut Gardens

152 Red Hill Road, Middletown, NJ 07748

732-842-4000



Deep Cut Gardens is dedicated to the home gardener. The gardens and greenhouses are planned as a living catalog of cultivated and native plant materials to be observed through the seasons. Our renovated Parterre features 52 varieties of roses with over 180 bushes.

**Garden highlights:** Formal rose gardens, native plants and greenhouse located on a historic estate.

**Passport Fulfillment:** What was your favorite plant in the garden?

**Acres: 54      Est. 1977**

**Amenities:**



 @deepcutgardens

 Deep Cut Gardens

 [www.monmouthcountyparks.com](http://www.monmouthcountyparks.com)

 #deepcutgardens

# Grounds for Sculpture

80 Sculptors Way, Hamilton, NJ 08619

609-586-0616



A sculpture park and arboretum in Hamilton Township, NJ, Grounds for Sculpture features over 270 contemporary outdoor sculptures, as well as rotating exhibitions in six indoor galleries, in addition to offering concerts, performances, family festivals, classes, fine dining, and shopping year-round.

**Garden highlights:** Wildflower meadows, tropical plants, manicured fairways and reflecting pools. Accredited Level I arboretum.

**Passport fulfillment:** Get a stamp at the welcome center.

**Acres: 42**

**Est. 1992**

**Amenities:**



@groundsforsculpture



@gfsnj



[www.groundsforsculpture.org](http://www.groundsforsculpture.org)



groundsforsculpture

# Marquand Park and Arboretum

Lover's Lane, Princeton NJ 08542

No phone



Originally the landscaped garden of a 19th century estate, this accredited Level I arboretum is a historic preserve of trees and woodland offering a variety of recreational and educational experiences in Princeton.

**Garden highlights:** 140 exotic & native specimen trees, some of which are the largest of their kind in NJ. Rare evergreens, and playful highlights for children, including a large naturalistic sandbox.

**Passport Fulfillment:** Name a tree listed on the kiosk map named after a vegetable.

**Acres: 17 Est. 1953**

**Amenities:**



 marquandpark



[www.marquandpark.org](http://www.marquandpark.org)



Pine-ingforprinceton

# Morven Museum and Garden

55 Stockton Street, Princeton, NJ 08540

609-924-8144



Built in the 1750s as home of one of NJ’s signers of the Declaration of Independence, and later serving as NJ’s first Governor’s Mansion, Morven’s grounds offer 250+ years of garden history in the heart of Princeton.

**Garden highlights:** Elm allée, Northern Catalpas, 150+ year old Wisteria, a profusion of Peonies, annually changing demonstration gardens and more.

**Passport Fulfillment:** What date did Richard Stockton tell Annis that the materials sent for her ‘sweet little flower garden’ could be planted? (found on ‘Annis garden’ sign).

**Acres: 5 Est. 2004**

**Amenities:**



[Morven.museum.garden](https://www.facebook.com/MorvenMuseumGarden)



[MorvenMuseum](https://twitter.com/MorvenMuseum)



[www.morven.org](http://www.morven.org)

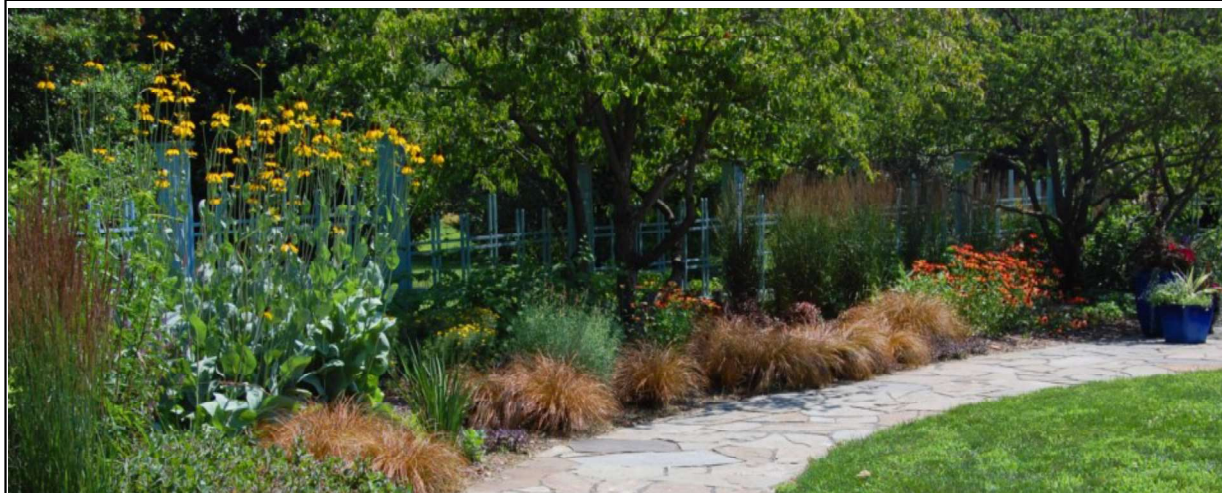


[morvenmuseum](https://www.instagram.com/morvenmuseum)

# Rutgers Gardens

130 Log Cabin Rd, North Brunswick, NJ 08902

848-932-7000



The official botanic garden of Rutgers University features designed beds, specialty gardens, tree and shrub collections, a student farm and farmers market, as well as the Helyar Woods trails and natural areas.

**Garden highlights:** Historic holly, daylily, rhododendron, and evergreen collection, AAS trial garden, pollinator beds, native plants, Bamboo Grove, and succulents.

**Passport Fulfillment:** Password posted in the visitor's kiosk by Holly House.

**Acres: 180**

**Est. 1916**

**Amenities:**



RutgersGardens

[www.rutgersgardens.rutgers.edu](http://www.rutgersgardens.rutgers.edu)



rutgersgardens



rutgersgardens

# Willowwood Arboretum

300 Longview Rd, Far Hills, NJ 07931

973-326-7600



Starting in 1908 two brothers developed NJ’s longest continually operating Arboretum, Willowwood, where carefully developed ornamental gardens are bordered by managed woodlands and undisturbed forest. It has been a facility of the Morris County Park Commission since 1980.

**Garden highlights:** Over 3500 varieties of native and exotic plants including a 100’ tall Dawn Redwood, and an extensive lilac collection.

**Passport Fulfillment:** Password at the kiosk.

**Acres: 136      Est. 1950**

**Amenities:**



 <https://www.willowwoodarboretum.org>

# 1719 William Trent House

15 Market St, Trenton, NJ 08611

609-989-3027



This green oasis surrounds the house of Trenton’s founder. It includes an English colonial kitchen garden, food plants of the Lenape people, an African diaspora garden, a replica bee house, and heirloom apple trees. All illustrate 1720s land management in miniature.

**Garden highlights:** A majestic 50’+ saucer magnolia tree, as well as lush summer vegetable and herb gardens.

**Passport Fulfillment:** Have your passport signed at the desk in the Visitor Center.

**Acres: 3**

**Est. 1939**

**Amenities:**



trenthousemuseum



trenthousemuseum



[www.williamtrenthouse.org](http://www.williamtrenthouse.org)

# Sister Mary Grace Burns Arboretum

900 Lakewood Ave., Lakewood, NJ 08701

732-987-2373



Situated on the campus of Georgian Court University, this Level II accredited arboretum also boasts four formal gardens created before 1910. These grace the grounds of a Gilded-age home built to resemble a Georgian period English Country Estate.

**Garden highlights:** Formal gardens, Holly & *Clethra* collections, Pinelands plant garden.

**Passport Fulfillment:** Write the number of different language signs attached to the Peace Pole opposite the entrance to Jeffries Hall.

**Acres: 100      Est. 1989**

**Amenities:**



[www.georgian.edu/arboretum](http://www.georgian.edu/arboretum)



# Linwood Arboretum

1410 Wabash Ave., Linwood, NJ 08221

609 214-1399



A small hidden gem, the Linwood Arboretum emphasizes uncommon or rare woody plants particularly suited for the NJ home landscape. Allen Lacy, long-time NY Times Garden columnist, was founding plant curator.

**Garden highlights:** See the “Space Tree,” a white pine sprouted on space shuttle Challenger. Linwood also features a raised Bog Garden. Something is blooming 365 days a year!

**Passport Fulfillment:** Find the stamp in the information board box, on the wall under the pergola, and mark your own passport.

**Acres: 0.75 Est. 2009**

**Amenities:**



Linwood-Arboretum-210318825786316/



[www.linwoodarboretum.org](http://www.linwoodarboretum.org)

# Barton Arboretum & Nature Preserve

1 Medford Leas Way, Medford, NJ 08055

609 -654-3000



Lushly landscaped areas, meadows, natural woodlands and specimen trees grace the grounds of a retirement community guided by Quaker principles. This is a Level I -accredited Arboretum, with a special interest in natives.

**Garden highlights:** Courtyard gardens designed for year-round interest, the Pinetum, native tree grove and peony garden.

**Passport Fulfillment:** Get your passport stamped at the Reception Desk.

**Acres: 168 Est. 1971**

**Amenities:**



Medford-Leas-102635969806636

[www.bartonarboretum.org](http://www.bartonarboretum.org)

*Fulfillment/Stamp Garden 1  
Richard Dekorte Park*

*Fulfillment/Stamp Garden 2  
Durand-Hedden Hse & Gardens*

*Date:*

*Date:*

*Fulfillment/Stamp Garden 3  
Frelinghuysen Arboretum*

*Fulfillment/Stamp Garden 4  
Greater Newark Conservancy*

*Date:*

*Date:*

*Fulfillment/Stamp Garden 5  
Greenwood Gardens*

*Fulfillment/Stamp Garden 6  
Cora Hartshorn Arboretum*

*Date:*

*Date:*

*Fulfillment/Stamp Garden 7  
Hanson Park Conservancy*

*Fulfillment/Stamp Garden 8  
Laurelwood Arboretum*

*Date:*

*Date:*

*Fulfillment/Stamp Garden 9  
Macculloch Hall Historical Museum*

*Fulfillment/Stamp Garden 10  
NJ State Botanical Garden/Skylands*

*Date:*

*Date:*

*Fulfillment/Stamp Garden 11  
Presby Memorial Iris Gardens*

*Fulfillment/Stamp Garden 12  
Reeves-Reed Arboretum*

*Date:*

*Date:*

*Fulfillment/Stamp Garden 13  
Teaneck Creek Conservancy*

*Fulfillment/Stamp Garden 14  
Gardens at Liberty Hall*

*Date:*

*Date:*

*Fulfillment/Stamp Garden 15  
Van Vleck House & Gardens*

*Fulfillment/Stamp Garden 16  
Bamboo Brook Outdoor Ed. Center*

*Date:*

*Date:*

*Fulfillment/Stamp Garden 17*  
Leonard J. Buck Garden

*Date:*

*Fulfillment/Stamp Garden 18*  
Colonial Park Gardens

*Date:*

*Fulfillment/Stamp Garden 19*  
Deep Cut Gardens

*Date:*

*Fulfillment/Stamp Garden 20*  
Grounds For Sculpture

*Date:*

*Fulfillment/Stamp Garden 21*  
Marquand Park

*Date:*

*Fulfillment/Stamp Garden 22*  
Morven Museum & Garden

*Date:*

*Fulfillment/Stamp Garden 23*  
Rutgers Gardens

*Date:*

*Fulfillment/Stamp Garden 24*  
Willowwood Arboretum

*Date:*

*Fulfillment/Stamp Garden 25  
1719 William Trent House Museum*

*Fulfillment/Stamp Garden 26  
Sister Mary Grace Burns Arboretum*

*Date:*

*Date:*

*Fulfillment/Stamp Garden 27  
Linwood Arboretum*

*Fulfillment/Stamp Garden 28  
Barton Arboretum at Medford Leas*

*Date:*

*Date:*

# ***Learn more about our Gardens!***

## **Contact Our Speakers Bureau to Reserve a Talk on Garden State Gardens for Your Group:**

***“Garden State Gardens”*** is a one hour long power point presentation, filled with beautiful imagery, that takes you on a virtual tour of over 25 of New Jersey’s public gardens. Discover more about your favorites and those you have yet to visit! This is a perfect program for garden clubs, plant societies, senior groups, libraries and civic organizations.

**Presentations can also be held via teleconference/Zoom!**

**Contact [info@gardenstategardens.org](mailto:info@gardenstategardens.org) for more information,  
cost, and to request a booking.**

*Also available are individual presentations by members of GSG  
on a variety of garden topics. Contact the Gardens directly.*





Garden State | | Gardens

A Consortium of New Jersey's Public Gardens